

# Primary Care Commissioning Committee

28 September 2016

<b>Details</b>	Part 1	<b>X</b>	Part 2		Agenda Item No.	<b>2</b>
Title of Paper:	Declarations of Interest					
Board Member:	Mike Woodhead, Chief Finance Officer					
Author:	Michelle McCusker, Interim Governance Manager					
Presenter:	Andrew Clough, Lay member for Q & R/PCCC Chair					
Please indicate:	For Decision		For Information	<b>X</b>	For Discussion	

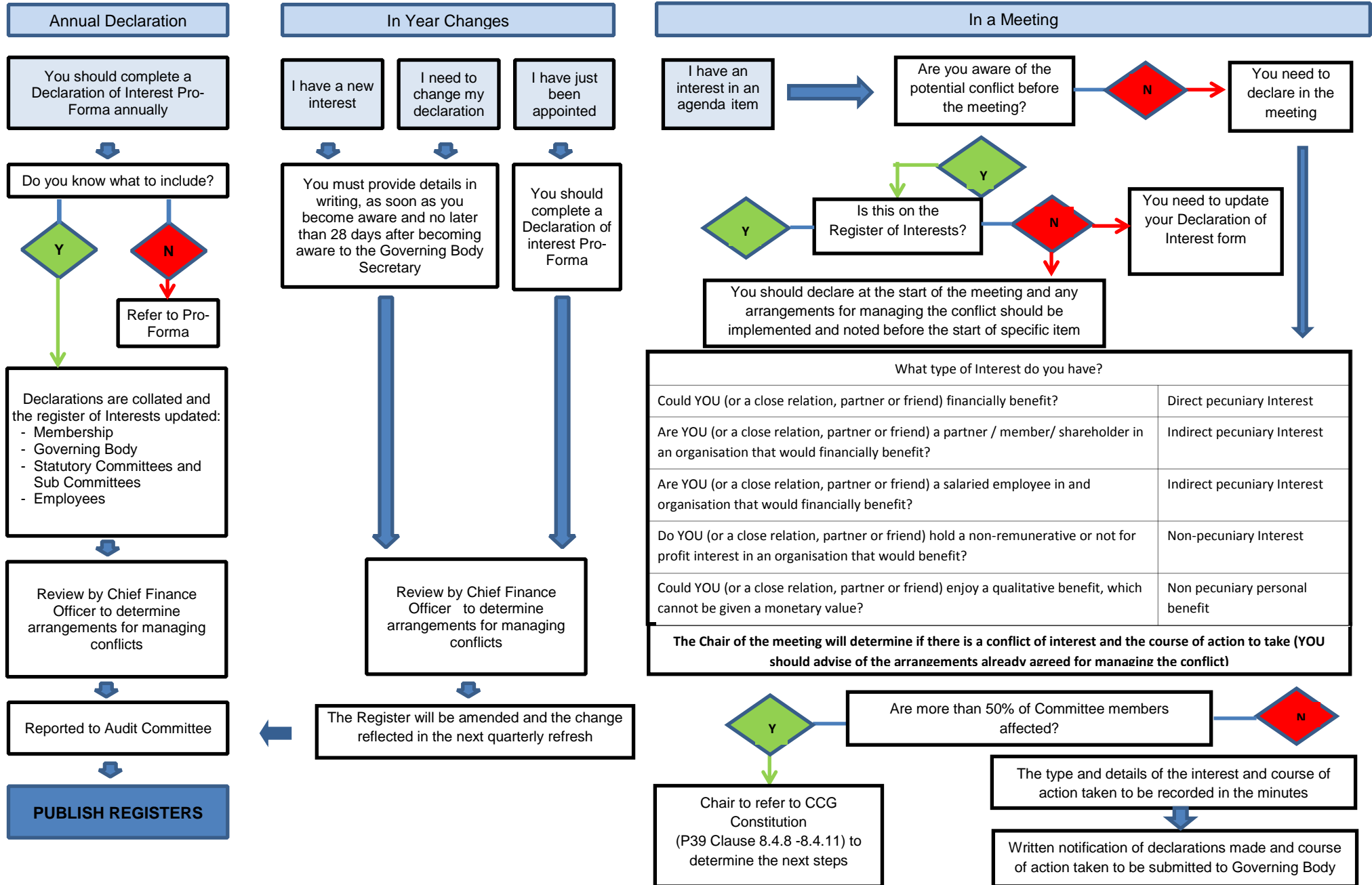
## Executive Summary

<b>Summary</b>	<p>The Clinical Commissioning Group (CCG) has a statutory requirement to keep, maintain and make publicly available Registers of Declarations of Interest under section 14O of the National Health Service Act 2006 Act (as inserted by section 25 of the Health and Social Care Act 2012).</p> <p>This paper sets out a flow chart for declaring and managing conflicts of interest, as outlined within the CCG's Conflicts of Interest Policy and also reflects those declarations made by all members and colleagues in attendance at the Primary Care Commissioning Committee meeting.</p> <p>There is also a requirement on the CCG to ensure for each conflict declared appropriate management arrangements are in place and for these to be appropriately communicated. This aspect of the declarations and registers will be progressed and updates provided accordingly.</p> <p>Until all arrangements are confirmed, all conflicts should be declared with any specific management arrangements required during the course of the meeting being determined by the Chair of the Primary Care Commissioning Committee, with an accurate record of action taken recorded in the minutes.</p>					
<b>Risk</b>	<b>High</b>		<b>Medium</b>	<b>X</b>	<b>Low</b>	
	<p>The main risk associated with this paper relate to Conflicts of Interests, both in terms of process, implementation and assurance. There are policies in place, however further implementation is required. The process of seeking declarations at each meeting acts as a safeguard, however the CCG could be challenged on the robustness of its arrangements and registers as they are not in keeping with the CCG's Constitution, Conflicts of Interest Policy or other statutory guidance.</p>					
<b>Recommendations</b>	<p>The Primary Care Commissioning Committee is asked to:</p> <ul style="list-style-type: none"> <li>note the Register of Conflicts declared in respect of the members of the Primary Care Commissioning Committee and the associated business of the meeting; and</li> <li>ensure appropriate action is taken as necessary in respect of any conflicts declared.</li> </ul>					

**Strategic themes**

Deliver improvement in outcomes for patients			
Deliver service improvement through system redesign in priority areas			
Develop NHS Bury CCG and Primary Care capability as commissioners and leaders			
Deliver through the Health and Wellbeing Board improved population health and reduction in inequalities			
Deliver the CCG element of QUIPP through effective system management and working with partners and stakeholders and ensuring a culture with focus on quality, fostering innovation, improving health outcomes and reducing inequalities.			
Equality Impact Assessed?		Supports NHS Bury CCG Governance arrangements	<b>X</b>

## Declaration of Interest Flowchart



**Register of Declarations of Conflicts of Interest**  
**Primary Care Commissioning Committee**

Name	Role	Declaration	Management Arrangements
<b>Voting Members</b>			
Andrew Clough	<p style="text-align: center;"><b>Primary Care Commissioning Committee Chair</b></p> <p>Lay Member for Quality &amp; Risk</p>	Personal <ul style="list-style-type: none"> <li>• Director AECUS Management &amp; Training Services Ltd.</li> </ul> Associated <ul style="list-style-type: none"> <li>• None</li> </ul>	<p>No specific management arrangements required.</p> <p>General guidance to be followed in respect of declaring conflicts of interest where identified, in advance and during the meeting.</p>
David McCann	<p style="text-align: center;"><b>Primary Care Commissioning Committee Vice Chair</b></p> <p>Lay Member for Patient and Public Participation</p>	Personal <ul style="list-style-type: none"> <li>• Senior Partner Woodcocks Solicitors, Bury.</li> <li>• Non-Executive Director Rock Healthcare Limited, Bury.</li> <li>• Non-Executive Director Praxis Real Estate Management Limited, Manchester</li> </ul> Associated <ul style="list-style-type: none"> <li>• None</li> </ul>	<p>Specific arrangements in respect of potential conflicts arising from the Non-Executive Director of Rock Healthcare Limited to be given further consideration.</p> <p>General guidance to be followed in respect of declaring conflicts of interest where identified, in advance and during the meeting.</p>
Stuart North	<p style="text-align: center;">Chief Officer and Accountable Officer</p>	Personal <ul style="list-style-type: none"> <li>• None</li> </ul> Associated <ul style="list-style-type: none"> <li>• None</li> </ul>	<p>General guidance to be followed in respect of declaring conflicts of interest where identified, in advance and during the meeting.</p>
Mike Woodhead	<p style="text-align: center;">Interim Chief Finance Officer, Bury CCG</p>	Personal <ul style="list-style-type: none"> <li>• Director and Owner of Pennine Consulting Ltd.</li> </ul> Associated <ul style="list-style-type: none"> <li>• None</li> </ul>	<p>Specific arrangements in respect of potential conflicts arising from the personal and associated declarations to be given further consideration.</p>
Margaret O'Dwyer	<p style="text-align: center;">Director of Commissioning and Business Delivery</p>	Personal <ul style="list-style-type: none"> <li>• Sister is a research nurse at Christies</li> </ul> Associated <ul style="list-style-type: none"> <li>• None</li> </ul>	<p>General guidance to be followed in respect of declaring conflicts of interest where identified, in advance and during the meeting.</p>

Lesley Jones	Director of Public Health	Personal <ul style="list-style-type: none"> <li>• None</li> </ul> Associated <ul style="list-style-type: none"> <li>• None</li> </ul>	General guidance to be followed in respect of declaring conflicts of interest where identified, in advance and during the meeting.
TBC	Lay Nurse	TBC	TBC
Amy Lepiorz	Deputy Director of Primary Care	Personal <ul style="list-style-type: none"> <li>• None</li> </ul> Associated <ul style="list-style-type: none"> <li>• None</li> </ul>	General guidance to be followed in respect of declaring conflicts of interest where identified, in advance and during the meeting.
<b>Non-Voting Members</b>			
Dr. Kiran Patel	CCG Chair and Clinical Director	Personal <ul style="list-style-type: none"> <li>• Principle GP Greenmount Medical Centre.</li> <li>• Medical Director - Laserase Bolton: Private and NHS Provider of a range of cosmetic laser treatments.</li> <li>• GP Practice membership of Bury GP Federation</li> </ul> Associated <ul style="list-style-type: none"> <li>• Spouse is GP at Harwood Medical Centre, Bolton.</li> <li>• Spouse is shareholder - Laserase Bolton: Private and NHS Provider of a range of cosmetic laser treatments.</li> <li>• Spouse is shareholder - ABL Health: Provider of specialist weight management services for several NHS organisations in Greater Manchester and elsewhere.</li> </ul>	Specific arrangements in respect of potential conflicts arising from the personal and associated declarations to be given further consideration.  General guidance to be followed in respect of declaring conflicts of interest where identified, in advance and during the meeting.
Dr. Jeffrey Schryer	Clinical Director	Personal <ul style="list-style-type: none"> <li>• GP Partner at Whittaker Lane Medical Centre.</li> <li>• GP Practice Membership of Bury GP Federation.</li> <li>• Trustee for Hersel Weis Sure Start Centre, Salford</li> </ul> Associated <ul style="list-style-type: none"> <li>• None</li> </ul>	Specific arrangements in respect of potential conflicts arising from the personal and associated declarations to be given further consideration.  General guidance to be followed in respect of declaring conflicts of interest where identified, in advance and during the meeting.

Dr Amarbas Chandock	Secondary Care Consultant	<p>Personal</p> <ul style="list-style-type: none"> <li>• Director of ORAS Locum Ltd</li> <li>• Wife is a locum GP in Birmingham</li> </ul> <p>Associated</p> <ul style="list-style-type: none"> <li>• None</li> </ul>	<p>Specific arrangements in respect of potential conflicts arising from the personal and associated declarations to be given further consideration.</p> <p>General guidance to be followed in respect of declaring conflicts of interest where identified, in advance and during the meeting</p>
Miss Sara Roscoe	NHS England Representative	TBC	General guidance to be followed in respect of declaring conflicts of interest where identified, in advance and during the meeting.
Anne Brown	Patient Cabinet Representative	TBC	General guidance to be followed in respect of declaring conflicts of interest where identified, in advance and during the meeting.
Barbara Barlow	Bury Healthwatch	TBC	General guidance to be followed in respect of declaring conflicts of interest where identified, in advance and during the meeting.
Pat Jones Greenhalgh	Health and Wellbeing Board Representative	<p>Personal</p> <ul style="list-style-type: none"> <li>• Executive Director of Commissioning &amp; Well-Being</li> </ul> <p>Associated</p> <ul style="list-style-type: none"> <li>• None</li> </ul>	General guidance to be followed in respect of declaring conflicts of interest where identified, in advance and during the meeting.
Dr Mo Jiva	Bury and Rochdale LMC Representative	TBC	<p>Specific arrangements in respect of potential conflicts arising from the personal and associated declarations to be given further consideration.</p> <p>General guidance to be followed in respect of declaring conflicts of interest where identified, in advance and during the meeting.</p>
TBC	LPC Representative	TBC	
TBC	LOC Representative	TBC	
TBC	LDC Representative	TBC	