

Primary Care Commissioning Committee

August 2016

Details	Part 1	✓	Part 2		Agenda Item No.	2
Title of Paper:	Declarations of Interest					
Board Member:	Mike Woodhead, Interim Chief Finance Officer					
Author:						
Presenter:	Andrew Clough, Lay Member for Quality and Risk / PCCC Committee Chair					
Please indicate:	For Decision		For Information	X	For Discussion	

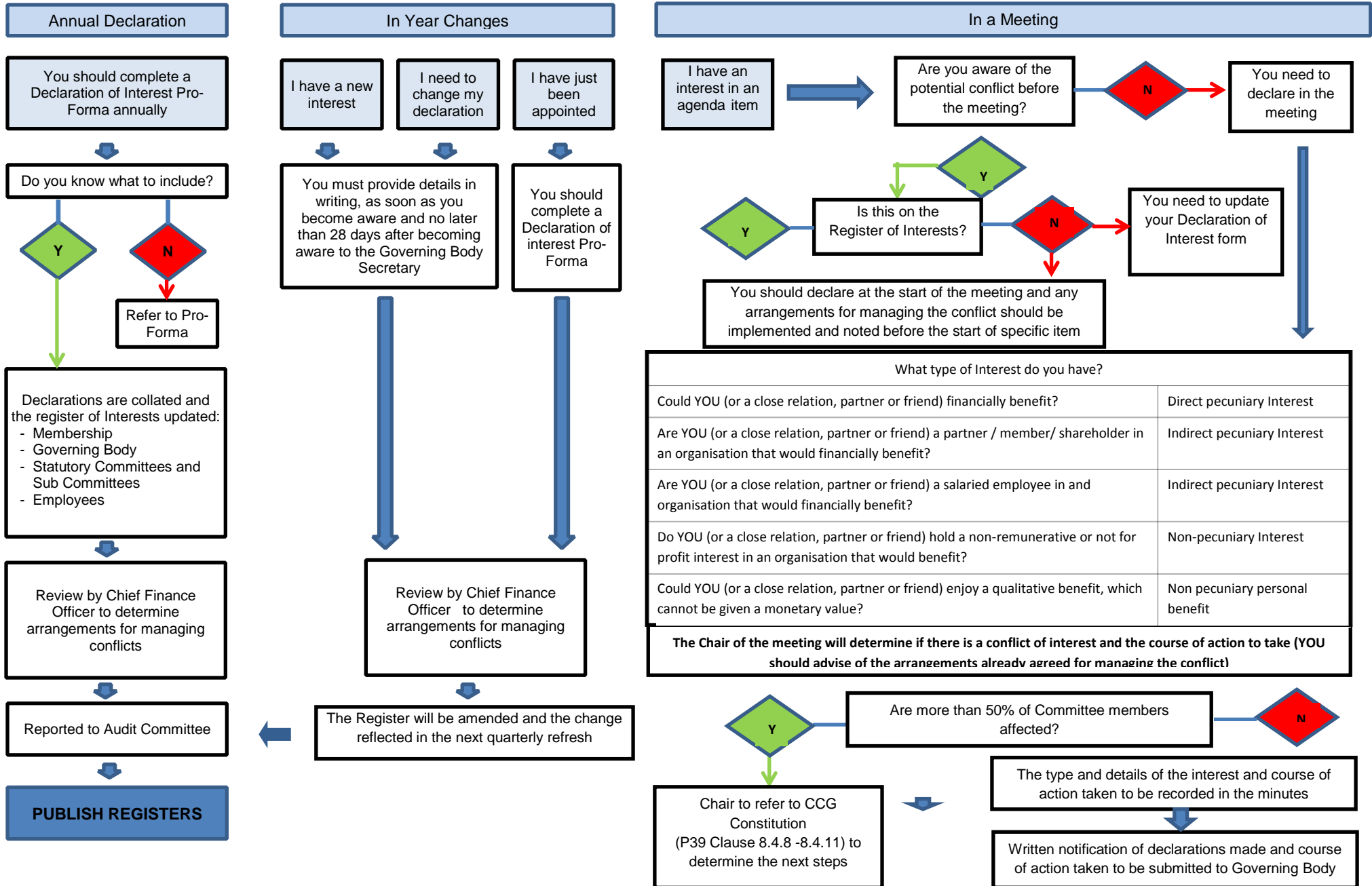
Executive Summary

Summary	<p>The Clinical Commissioning Group (CCG) has a statutory requirement to keep, maintain and make publicly available Registers of Declarations of Interest under section 14O of the National Health Service Act 2006 Act (as inserted by section 25 of the Health and Social Care Act 2012).</p> <p>This paper sets out a flow chart for declaring and managing conflicts of interest, as outlined within the CCG's Conflicts of Interest Policy and also reflects those declarations made by all members of the committee.</p> <p>The current register reflects the membership as outlined within the draft terms of reference.</p> <p>There is also a requirement on the CCG to ensure for each conflict declared, appropriate management arrangements are in place and for these to be appropriately communicated. This aspect of the declarations and registers will be progressed and updates provided accordingly.</p> <p>Until all arrangements are confirmed, all conflicts should be declared with any specific management arrangements required during the course of the meeting being determined by the Primary Care Commissioning Committee, with an accurate record of action taken recorded in the minutes.</p>					
Risk	High		Medium	X	Low	
	<p>The main risk associated with this paper relate to Conflicts of Interests, both in terms of process, implementation and assurance. There are policies in place, however further implementation is required. The process of seeking declarations at each meeting acts as a safeguard, however the CCG could be challenged on the robustness of its arrangements and registers as they are not in keeping with the CCG's Constitution, Conflicts of Interest Policy or other statutory guidance.</p>					
Recommendations	<p>The Primary Care Commissioning Committee is asked to:</p> <ul style="list-style-type: none"> note the Register of Conflicts declared in respect of the members of the Primary Care Commissioning Committee and the associated business of the meeting; and ensure appropriate action is taken as necessary in respect of any conflicts declared. 					

Strategic themes

Deliver improvement in outcomes for patients			
Deliver service improvement through system redesign in priority areas			
Develop NHS Bury CCG and Primary Care capability as commissioners and leaders			
Deliver through the Health and Wellbeing Board improved population health and reduction in inequalities			
Deliver the CCG element of QUIPP through effective system management and working with partners and stakeholders and ensuring a culture with focus on quality, fostering innovation, improving health outcomes and reducing inequalities.			
Equality Impact Assessed?		Supports NHS Bury CCG Governance arrangements	X

Declaration of Interest Flowchart



Register of Declarations of Conflicts of Interest
Primary Care Commissioning Committee

Name	Role	Declaration	Management Arrangements
Voting Members			
Andrew Clough	<p style="text-align: center;">Primary Care Commissioning Committee Chair</p> <p>Lay Member for Quality & Risk</p>	Personal <ul style="list-style-type: none"> • Director AECUS Management & Training Services Ltd. Associated <ul style="list-style-type: none"> • None 	<p>No specific management arrangements required.</p> <p>General guidance to be followed in respect of declaring conflicts of interest where identified, in advance and during the meeting.</p>
David McCann	<p style="text-align: center;">Primary Care Commissioning Committee Vice Chair</p> <p>Lay Member for Patient and Public Participation</p>	Personal <ul style="list-style-type: none"> • Senior Partner Woodcocks Solicitors, Bury. • Non-Executive Director Rock Healthcare Limited, Bury. • Non-Executive Director Praxis Real Estate Management Limited, Manchester Associated <ul style="list-style-type: none"> • None 	<p>Specific arrangements in respect of potential conflicts arising from the Non-Executive Director of Rock Healthcare Limited to be given further consideration.</p> <p>General guidance to be followed in respect of declaring conflicts of interest where identified, in advance and during the meeting.</p>
Stuart North	<p style="text-align: center;">Chief Officer and Accountable Officer</p>	Personal <ul style="list-style-type: none"> • None Associated <ul style="list-style-type: none"> • None 	<p>General guidance to be followed in respect of declaring conflicts of interest where identified, in advance and during the meeting.</p>
Mike Woodhead	<p style="text-align: center;">Interim Chief Finance Officer, Bury CCG</p>	Personal <ul style="list-style-type: none"> • Director and Owner of Pennine Consulting Ltd. Associated <ul style="list-style-type: none"> • None 	<p>Specific arrangements in respect of potential conflicts arising from the personal and associated declarations to be given further consideration.</p>
Margaret O'Dwyer	<p style="text-align: center;">Director of Commissioning and Business Delivery</p>	Personal <ul style="list-style-type: none"> • None Associated <ul style="list-style-type: none"> • None 	<p>General guidance to be followed in respect of declaring conflicts of interest where identified, in advance and during the meeting.</p>

Lesley Jones	Director of Public Health	Personal <ul style="list-style-type: none"> • None Associated <ul style="list-style-type: none"> • None 	General guidance to be followed in respect of declaring conflicts of interest where identified, in advance and during the meeting.
Karen Richardson	Lay Nurse – Primary Care Quality	Personal <ul style="list-style-type: none"> • Stockport CCG Lay Nurse Governing Body Member. • Member of the Royal College of Nursing (RCN). • Member of the Nursing and Midwifery Council (NMC). Associated None	General guidance to be followed in respect of declaring conflicts of interest where identified, in advance and during the meeting.
	Deputy Director of Primary Care	Not yet commenced in post	General guidance to be followed in respect of declaring conflicts of interest where identified, in advance and during the meeting.
Non-Voting Members			
Dr. Kiran Patel	CCG Chair and Clinical Director	Personal <ul style="list-style-type: none"> • Principle GP Greenmount Medical Centre. • Medical Director - Laserase Bolton: Private and NHS Provider of a range of cosmetic laser treatments. • GP Practice membership of Bury GP Federation Associated <ul style="list-style-type: none"> • Spouse is GP at Harwood Medical Centre, Bolton. • Spouse is shareholder - Laserase Bolton: Private and NHS Provider of a range of cosmetic laser treatments. • Spouse is shareholder - ABL Health: Provider of specialist weight management services for several NHS organisations in Greater Manchester and elsewhere. 	Specific arrangements in respect of potential conflicts arising from the personal and associated declarations to be given further consideration. General guidance to be followed in respect of declaring conflicts of interest where identified, in advance and during the meeting.

Dr. Jeffrey Schryer	Clinical Director	Personal <ul style="list-style-type: none"> • GP Partner at Whittaker Lane Medical Centre. • GP Practice Membership of Bury GP Federation. • Trustee for Hersel Weis Sure Start Centre, Salford Associated <ul style="list-style-type: none"> • None 	Specific arrangements in respect of potential conflicts arising from the personal and associated declarations to be given further consideration. General guidance to be followed in respect of declaring conflicts of interest where identified, in advance and during the meeting.
Miss Sara Roscoe	NHS England Representative	TBC	General guidance to be followed in respect of declaring conflicts of interest where identified, in advance and during the meeting.
Anne Brown	Patient Cabinet Representative	TBC	General guidance to be followed in respect of declaring conflicts of interest where identified, in advance and during the meeting.
Barbara Barlow	Bury Healthwatch	TBC	General guidance to be followed in respect of declaring conflicts of interest where identified, in advance and during the meeting.
Pat Jones Greenhalgh	Health and Wellbeing Board Representative	Personal <ul style="list-style-type: none"> • Executive Director of Commissioning & Well-Being Associated <ul style="list-style-type: none"> • None 	General guidance to be followed in respect of declaring conflicts of interest where identified, in advance and during the meeting.
Dr Mo Jiva	Bury and Rochdale LMC Representative	TBC	Specific arrangements in respect of potential conflicts arising from the personal and associated declarations to be given further consideration. General guidance to be followed in respect of declaring conflicts of interest where identified, in advance and during the meeting.
TBC	LPC Representative	TBC	
TBC	LOC Representative	TBC	
TBC	LDC Representative	TBC	