

Governing Body

25 January 2017

Details	Part 1	✓	Part 2		Agenda Item No.	2
Title of Paper:	Declarations of Interest					
Board Member:	Margaret O'Dwyer, Director of Commissioning and Business Delivery/Deputy CO					
Author:	Danny Lansley, Corporate Governance Manager					
Presenter:	Kiran Patel, CCG Chair					
Please indicate:	For Decision		For Information		For Discussion	✓

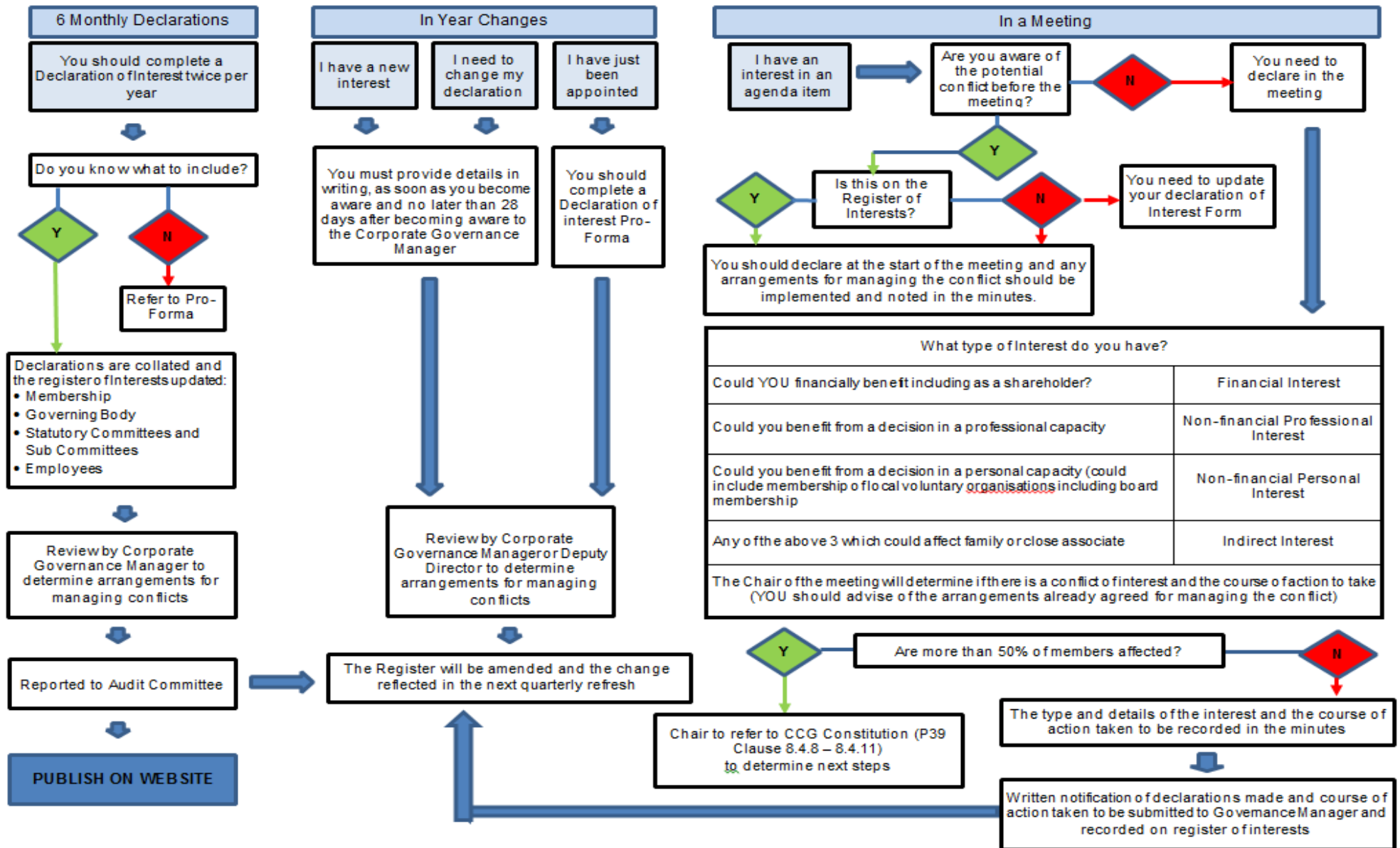
Executive Summary

Summary	<p>The Clinical Commissioning Group (CCG) has a statutory requirement to keep, maintain and make publicly available Registers of Declarations of Interest under section 140 of the National Health Service Act 2006 Act (as inserted by section 25 of the Health and Social Care Act 2012). The requirement to make declarations of interest also includes any offers of gifts and hospitality received.</p> <p>This paper sets out a flow chart for declaring and managing conflicts of interest, as outlined within the CCG's Conflicts of Interest Policy and also reflects those declarations made by all members and colleagues in attendance at Governing Body meetings.</p> <p>There is also a requirement on the CCG to ensure for each conflict declared, appropriate management arrangements are in place and for these to be appropriately communicated.</p> <p>Until all arrangements are confirmed, all conflicts should be declared with any specific management arrangements required during the course of the meeting being determined by the Chair, with an accurate record of action taken recorded in the minutes. The current register reflects the latest attendees.</p>					
Risk	High		Medium	✓	Low	
	<p>The main risk associated with this paper relate to Conflicts of Interests, both in terms of process, implementation and assurance. There are policies in place, however further implementation is required. The process of seeking declarations at each meeting acts as a safeguard, however the CCG could be challenged on the robustness of its arrangements.</p>					
Recommendations	<p>Governing Body is asked to:</p> <ul style="list-style-type: none"> • Note the Register of Interest in respect of the members of the Governing Body and the associated business of the meeting; and • Ensure appropriate action is taken as necessary in respect of any conflicts declared including gifts and hospitality. 					

Strategic themes

To deliver improved outcomes and reduce health inequalities for patients through better preventative strategies	
To deliver service re-design in priority areas through innovation	
To develop primary care to become excellent and high performing commissioners	
To develop the CCG leadership to work with the Local Authority to be excellent integrated commissioners	
To develop robust and effective working relationships with all stakeholders and partners to drive integrated commissioning	
To deliver long term financial sustainability through effective commissioning and innovative investment across the wider system	
To develop and influence the provider landscape through development of a Locality Care Organisation (LCO)	
Equality Analysis Assessed?	Supports NHS Bury CCG Governance arrangements ✓

Declaration of Interest Flowchart



Register of Declarations of Interest

Name	Role	Date of Last Return	Declaration	Management Arrangements
Dr. Kiran Patel	CCG Chair	12/12/2016	<p>Principle GP Greenmount Medical Centre (1996 – Present) – Financial Interest</p> <p>Medical Director - Laserase Bolton: Private and NHS Provider of a range of cosmetic laser treatments (1994 – Current) – Financial Interest</p> <p>GP Practice membership of Bury GP Federation (2014 – Current) – Indirect Financial</p> <p>Chair of Association of GM CCGs (2016) – Non-financial Professional</p> <p>Spouse is a GP at Harwood Medical Centre, Bolton (2002 – Current) – Indirect Financial</p> <p>Spouse is shareholder - Laserase Bolton: Private and NHS Provider of a range of cosmetic laser treatments (2012 – current) – Indirect Financial</p>	<p>Specific arrangements in respect of potential conflicts arising from the personal and associated declarations to be given further consideration.</p> <p>General guidance to be followed in respect of declaring conflicts of interest where identified, in advance and during the meeting.</p>
Stuart North	Chief and Accountable Officer	12/12/2016	None declared	General guidance to be followed in respect of declaring conflicts of interest where identified, in advance and during the meeting.
Mike Woodhead	Interim Chief Finance Officer	20/12/2016	None declared	General guidance to be followed in respect of declaring conflicts of interest where identified, in advance and during the meeting.
Margaret O'Dwyer	Director of Commissioning and Business Delivery/Deputy Chief Officer	16/12/2016	None declared	General guidance to be followed in respect of declaring conflicts of interest where identified, in advance and during the meeting.
Catherine Jackson	Executive Nurse	24/11/2016	None declared.	General guidance to be followed in respect of declaring conflicts of interest where identified, in advance and during the meeting.

Dr. Cathy Fines	Clinical Director	04/11/2015	<p>Personal</p> <ul style="list-style-type: none"> GP - The Uplands Medical Practice. GP Practice membership of Bury GP Federation. <p>Associated</p> <ul style="list-style-type: none"> Spouse is a Consultant at Central Manchester Health Trust (CMHT) 	<p>Specific arrangements in respect of potential conflicts arising from the personal and associated declarations to be given further consideration.</p> <p>General guidance to be followed in respect of declaring conflicts of interest where identified, in advance and during the meeting.</p>
Howard Hughes	Clinical Director	22/12/2016	<p>Financial Interest – Prestwich Pharmacy, Director (1995 – Present)</p> <p>Financial Interest – St Peter’s Pharmacy (Burnley) Ltd – Managing Director (2006 – Present)</p> <p>Financial Interest – Keirby Healthcare Ltd, Burnley, Director (2012 – Present) – Pharmacy now closed</p> <p>Financial Interest – Hughes McCaul Ltd, Director (1995 – Present) – Dormant company</p> <p>All above also indirect financial interests for Spouse.</p> <p>Indirect Non-financial Professional Interest – Sister employed as Performance Manager by Greater Manchester West Trust (2014 – Present)</p>	<p>Specific arrangements in respect of potential conflicts arising from the personal and associated declarations to be given further consideration.</p> <p>General guidance to be followed in respect of declaring conflicts of interest where identified, in advance and during the meeting.</p>
Dr. Victoria Moyle	Clinical Director	19/05/2015	<p>Personal</p> <ul style="list-style-type: none"> GP Principal, Spring Lane Surgery, Radcliffe. Director of Seamless Health Care (dormant company). GP Practice membership of Bury GP Federation <p>Associated</p> <ul style="list-style-type: none"> Husband is Director of GP Federation, Director HFR6. Father-in-law is co-owner of Oak Lodge Nursing Home. 	<p>Specific arrangements in respect of potential conflicts arising from the personal and associated declarations to be given further consideration.</p> <p>General guidance to be followed in respect of declaring conflicts of interest where identified, in advance and during the meeting.</p>

Dr. Jeffrey Schryer	Clinical Director	21/12/2016	<p>Financial Interest - Managing Partner, Whittaker Lane, Medical Centre</p> <p>Non-financial Professional Interest – GP Trainer</p> <p>Non-financial Professional Interest – Undergraduate Tutor, University of Manchester</p> <p>Non-financial Personal Interest – Trustee, Hershel Weiss Sure Start Centre, Salford</p> <p>Indirect Financial Interest – Wife receives income from Whittaker Lane Medical Practice</p>	<p>Specific arrangements in respect of potential conflicts arising from the personal and associated declarations to be given further consideration.</p> <p>General guidance to be followed in respect of declaring conflicts of interest where identified, in advance and during the meeting.</p>
David McCann	Lay Member for Patient and Public Participation	02/10/2015	<p>Personal</p> <ul style="list-style-type: none"> • Senior Partner Woodcocks Solicitors, Bury. • Non-Executive Director Rock Healthcare Limited, Bury. • Non-Executive Director Praxis Real Estate Management Limited, Manchester • Non-Executive Director, PCL (CIP) GP Ltd • Non-Executive Director, Praxis Capital Ltd <p>Associated</p> <ul style="list-style-type: none"> • None 	<p>Specific arrangements in respect of potential conflicts arising from the Non-Executive Director of Rock Healthcare Limited to be given further consideration.</p> <p>General guidance to be followed in respect of declaring conflicts of interest where identified, in advance and during the meeting.</p>
Chris Wild	Lay Member for Audit, Remuneration and Conflicts of Interest	05/01/2017	None declared	General guidance to be followed in respect of declaring conflicts of interest where identified, in advance and during the meeting.
Peter Bury	Lay Member for Quality and Performance	19/10/2016	None declared	General guidance to be followed in respect of declaring conflicts of interest where identified, in advance and during the meeting

Dr. Fazel Butt	East Sector Chair	21/12/2016	<p>Financial Interest – GP Principle – Huntley Mount Medical Centre (July 13 – Present)</p> <p>Financial Interest – GP Partner – Elms Medical Centre (Dec 16 – Present)</p> <p>Financial Interest – Member of GP Federation (Jan 15 – Present)</p>	<p>Specific arrangements in respect of potential conflicts arising from the personal and associated declarations to be given further consideration.</p> <p>General guidance to be followed in respect of declaring conflicts of interest where identified, in advance and during the meeting.</p>
Dr. Ajay Kotegaonkar,	West Sector Chair	January 2016	<p>Personal</p> <ul style="list-style-type: none"> • Senior GP Spring Lane Surgery, Radcliffe. • Director of Healthier Radcliffe (HFR6) • GP Federation Clinical Link • GP Federation shareholder • LMC representative for Radcliffe • Director of 2 dormant companies – HFR6 and Seamless Healthcare <p>Associated</p> <ul style="list-style-type: none"> • Spouse is:- <ul style="list-style-type: none"> - Principle GP at Spring Lane Surgery, Radcliffe - Clinical Director Bury CCG - Bury CCG Clinical Lead for urgent care • Father is: <ul style="list-style-type: none"> - Owner Oak Lodge / Holybank Nursing Homes - Chair of Governors at Bardoc - Shareholder in Rock Healthcare 	<p>Specific arrangements in respect of potential conflicts arising from the personal and associated declarations to be given further consideration.</p> <p>General guidance to be followed in respect of declaring conflicts of interest where identified, in advance and during the meeting.</p>
Dr. Wissam El-Jouzi	North Sector Chair	09/06/2016	<p>Personal</p> <ul style="list-style-type: none"> • GP Principal, Tottington Medical Practice. • Member of the Bury GP Federation. <p>Associated</p> <ul style="list-style-type: none"> • Spouse is also GP at Tottington Medical Practice. 	<p>Specific arrangements in respect of potential conflicts arising from the personal and associated declarations to be given further consideration.</p> <p>General guidance to be followed in respect of declaring conflicts of interest where identified, in advance and during the meeting.</p>

Amarbaj Singh Chandock	Governing Body Secondary Care Consultant		Personal <ul style="list-style-type: none"> • Director ORAS Locum Limited Associated <ul style="list-style-type: none"> • Spouse is Locum GP in Birmingham 	General guidance to be followed in respect of declaring conflicts of interest where identified, in advance and during the meeting.
Lesley Jones	Director of Public Health	07/12/2016	None declared	General guidance to be followed in respect of declaring conflicts of interest where identified, in advance and during the meeting.
Fiona Boyd	Governing Body Registered Nurse	17/10/2016	Non-financial Professional Interest - Employed by HMR CCG as Quality and Safety Lead	General guidance to be followed in respect of declaring conflicts of interest where identified, in advance and during the meeting.
In Attendance				
Paul Horrocks	Communications Consultant	21/12/2016	Financial Interest – Stockport Together – Health and Social Care Integration – Chair (2014 – Present) Non-financial Personal Interest – Bury Hospice – Trustee (2016 – Present) Non-financial Personal Interest – Central Manchester FT – Fundarising Board Member (2009 – Present) Non-financial Personal Interest – Fusiliers Museum, Bury – Board Member (2015 – Present) Financial Interest – Essential Comms, Bury – Partner Financial Interest – Gordon Burns Partnership - Partner	General guidance to be followed in respect of declaring conflicts of interest where identified, in advance and during the meeting.