

# Governing Body

28 September 2016

<b>Details</b>	Part 1	<b>X</b>	Part 2		Agenda Item No.	<b>2</b>
Title of Paper:	Declarations of Interest					
Board Member:	Mike Woodhead, Chief Finance Officer					
Author:	Michelle McCusker, Interim Governance Manager					
Presenter:	Dr Kiran Patel, Clinical Lead and CCG Chair					
Please indicate:	For Decision		For Information	<b>X</b>	For Discussion	

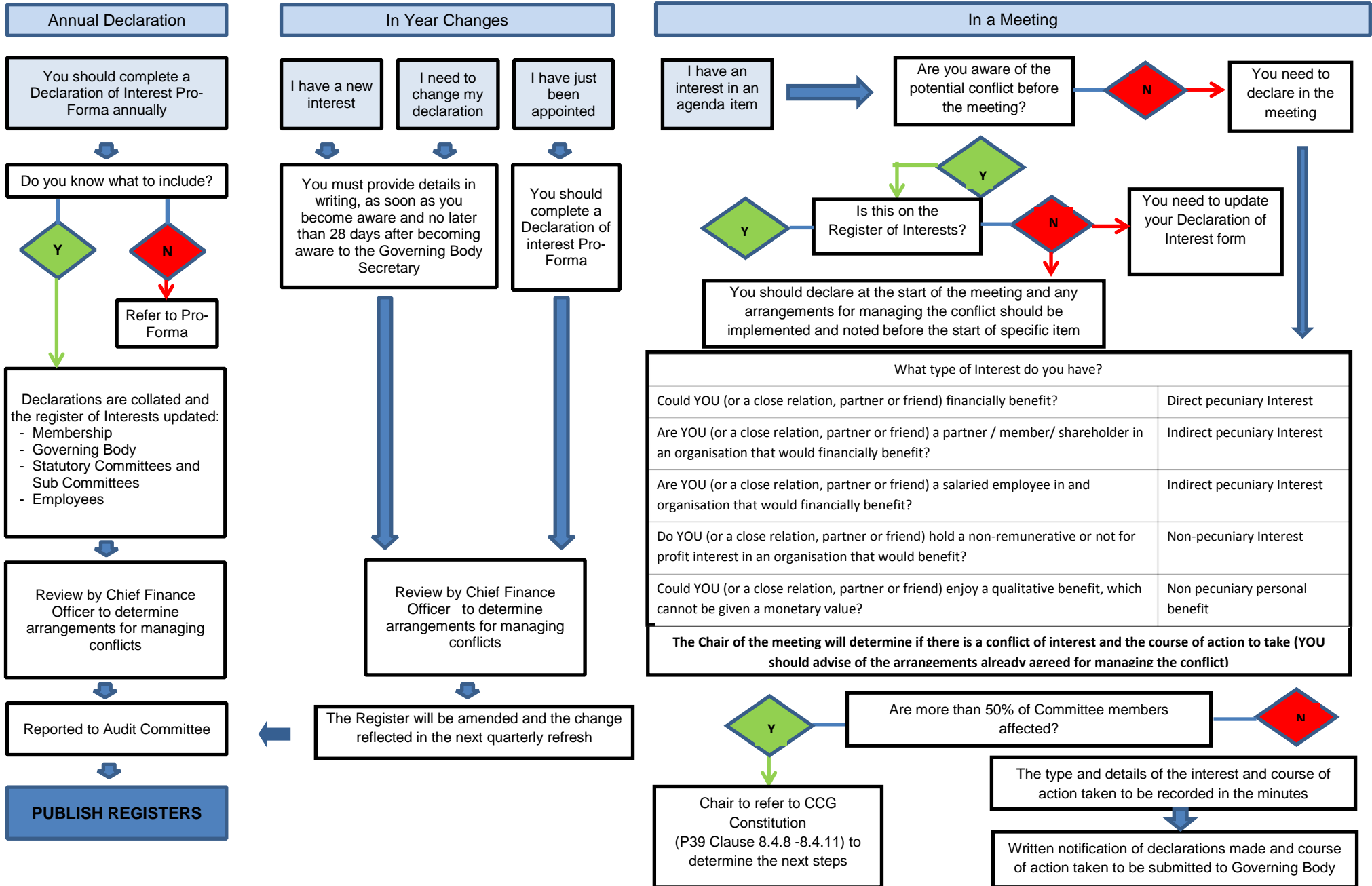
## Executive Summary

<b>Summary</b>	<p>The Clinical Commissioning Group (CCG) has a statutory requirement to keep, maintain and make publicly available Registers of Declarations of Interest under section 14O of the National Health Service Act 2006 Act (as inserted by section 25 of the Health and Social Care Act 2012).</p> <p>This paper sets out a flow chart for declaring and managing conflicts of interest, as outlined within the CCG's Conflicts of Interest Policy and also reflects those declarations made by all members and colleagues in attendance at the Governing Body meeting.</p> <p>There is also a requirement on the CCG to ensure for each conflict declared, appropriate management arrangements are in place and for these to be appropriately communicated. This aspect of the declarations and registers will be progressed and updates provided accordingly.</p> <p>Until all arrangements are confirmed, all conflicts should be declared with any specific management arrangements required during the course of the meeting being determined by the Chair of the Governing Body, with an accurate record of action taken recorded in the minutes.</p>					
<b>Risk</b>	<b>High</b>		<b>Medium</b>	<b>X</b>	<b>Low</b>	
	<p>The main risk associated with this paper relate to Conflicts of Interests, both in terms of process, implementation and assurance. There are policies in place, however further implementation is required. The process of seeking declarations at each meeting acts as a safeguard, however the CCG could be challenged on the robustness of its arrangements and registers as they are not in keeping with the CCG's Constitution, Conflicts of Interest Policy or other statutory guidance.</p>					
<b>Recommendations</b>	<p>The Governing body is asked to:</p> <ul style="list-style-type: none"> <li>note the Register of Conflicts declared in respect of the members of the Governing Body and the associated business of the meeting; and</li> <li>ensure appropriate action is taken as necessary in respect of any conflicts declared.</li> </ul>					

## Strategic themes

Deliver improvement in outcomes for patients			
Deliver service improvement through system redesign in priority areas			
Develop NHS Bury CCG and Primary Care capability as commissioners and leaders			
Deliver through the Health and Wellbeing Board improved population health and reduction in inequalities			
Deliver the CCG element of QUIPP through effective system management and working with partners and stakeholders and ensuring a culture with focus on quality, fostering innovation, improving health outcomes and reducing inequalities.			
Equality Impact Assessed?		Supports NHS Bury CCG Governance arrangements	<b>X</b>

## Declaration of Interest Flowchart



## Register of Declarations of Conflicts of Interest

### Governing Body

Name	Role	Declaration	Management Arrangements
Dr. Kiran Patel	<b>Governing Body Chair</b> CCG Chair and Clinical Director	<p>Personal</p> <ul style="list-style-type: none"> <li>• Principle GP Greenmount Medical Centre.</li> <li>• Medical Director - Laserase Bolton: Private and NHS Provider of a range of cosmetic laser treatments.</li> <li>• GP Practice membership of Bury GP Federation</li> </ul> <p>Associated</p> <ul style="list-style-type: none"> <li>• Spouse is shareholder - Laserase Bolton: Private and NHS Provider of a range of cosmetic laser treatments.</li> <li>• Spouse is shareholder - ABL Health: Provider of specialist weight management services for several NHS organisations in Greater Manchester and elsewhere.</li> </ul>	<p>Specific arrangements in respect of potential conflicts arising from the personal and associated declarations to be given further consideration.</p> <p>General guidance to be followed in respect of declaring conflicts of interest where identified, in advance and during the meeting.</p>
Stuart North	Chief Officer and Accountable Officer	<p>Personal</p> <ul style="list-style-type: none"> <li>• None</li> </ul> <p>Associated</p> <ul style="list-style-type: none"> <li>• None</li> </ul>	<p>General guidance to be followed in respect of declaring conflicts of interest where identified, in advance and during the meeting.</p>
Mike Woodhead	Chief Finance Officer	<p>Personal</p> <ul style="list-style-type: none"> <li>• Director of Pennine Consulting Ltd – a limited company which has previously contracted with Bury CCG but is unlikely to in the future</li> <li>• Ask EPM – close friend is a Director of Ask EPM which is a performance management company which may seek to do business with GMSS in the future</li> </ul> <p>Associated</p> <ul style="list-style-type: none"> <li>• None.</li> </ul>	<p>No specific management arrangements required.</p> <p>General guidance to be followed in respect of declaring conflicts of interest where identified, in advance and during the meeting.</p>

Margaret O'Dwyer	Director of Commissioning	<p>Personal</p> <ul style="list-style-type: none"> <li>Sister is a research nurse at Christie's</li> </ul> <p>Associated</p> <ul style="list-style-type: none"> <li>None</li> </ul>	General guidance to be followed in respect of declaring conflicts of interest where identified, in advance and during the meeting.
Catherine Jackson	Executive Governing Body Nurse	<p>Personal</p> <ul style="list-style-type: none"> <li>None</li> </ul> <p>Associated</p> <ul style="list-style-type: none"> <li>None</li> </ul>	General guidance to be followed in respect of declaring conflicts of interest where identified, in advance and during the meeting.
Dr. Cathy Fines	Clinical Director	<p>Personal</p> <ul style="list-style-type: none"> <li>GP - The Uplands Medical Practice.</li> <li>GP Practice membership of Bury GP Federation.</li> </ul> <p>Associated</p> <ul style="list-style-type: none"> <li>Spouse is a Consultant at Central Manchester Health Trust (CMHT)</li> </ul>	<p>Specific arrangements in respect of potential conflicts arising from the personal and associated declarations to be given further consideration.</p> <p>General guidance to be followed in respect of declaring conflicts of interest where identified, in advance and during the meeting.</p>
Howard Hughes	Clinical Director	<p>Personal</p> <ul style="list-style-type: none"> <li>Director and Shareholder of Prestwich Pharmacy</li> <li>Director of St peter's Pharmacy</li> <li>Director of Keily's healthcare</li> <li>Director of Hughes McCaul (dormant)</li> </ul> <p>Associated</p> <ul style="list-style-type: none"> <li>Spouse is also a Director and Shareholder for both Pharmacies.</li> </ul>	<p>Specific arrangements in respect of potential conflicts arising from the personal and associated declarations to be given further consideration.</p> <p>General guidance to be followed in respect of declaring conflicts of interest where identified, in advance and during the meeting.</p>
Dr. Victoria Moyle	Clinical Director	<p>Personal</p> <ul style="list-style-type: none"> <li>GP Principal, Spring Lane Surgery, Radcliffe.</li> <li>Director of Seamless Health Care (dormant company).</li> <li>GP Practice membership of Bury GP Federation</li> </ul> <p>Associated</p> <ul style="list-style-type: none"> <li>Husband is Director of GP Federation, Director HFR6.</li> <li>Father-in-law is co-owner of Oak Lodge Nursing Home.</li> </ul>	<p>Specific arrangements in respect of potential conflicts arising from the personal and associated declarations to be given further consideration.</p> <p>General guidance to be followed in respect of declaring conflicts of interest where identified, in advance and during the meeting.</p>

Dr. Jeffrey Schryer	Clinical Director	<p>Personal</p> <ul style="list-style-type: none"> <li>• GP Partner at Whittaker Lane Medical Centre.</li> <li>• GP Practice Membership of Bury GP Federation.</li> <li>• Trustee for Hersel Weis Sure Start Centre, Salford</li> <li>• GP Trainer</li> <li>• Undergraduate Tutor University Manchester</li> </ul> <p>Associated</p> <ul style="list-style-type: none"> <li>• None</li> </ul>	<p>Specific arrangements in respect of potential conflicts arising from the personal and associated declarations to be given further consideration.</p> <p>General guidance to be followed in respect of declaring conflicts of interest where identified, in advance and during the meeting.</p>
Dr. Fazel Butt,	East Sector Chair	<p>Personal</p> <ul style="list-style-type: none"> <li>• GP Huntley Mount Medical Centre, Bury.</li> <li>• GP Practice Membership of Bury GP Federation.</li> </ul> <p>Associated</p> <ul style="list-style-type: none"> <li>• None</li> </ul>	<p>Specific arrangements in respect of potential conflicts arising from the personal and associated declarations to be given further consideration.</p> <p>General guidance to be followed in respect of declaring conflicts of interest where identified, in advance and during the meeting.</p>
Dr. Ajay Kotegaonkar,	West Sector Chair	<p>Personal</p> <ul style="list-style-type: none"> <li>• Senior GP Spring Lane Surgery, Radcliffe.</li> <li>• Director of Healthier Radcliffe (HFR6)</li> <li>• GP Federation Clinical Link</li> <li>• GP Federation shareholder</li> <li>• LMC representative for Radcliffe</li> <li>• Director of 2 dormant companies – HFR6 and Seamless Healthcare</li> </ul> <p>Associated</p> <ul style="list-style-type: none"> <li>• Spouse is:- <ul style="list-style-type: none"> <li>- Principle GP at Spring Lane Surgery, Radcliffe</li> <li>- Clinical Director Bury CCG</li> <li>- Bury CCG Clinical Lead for urgent care</li> </ul> </li> <li>• Father is: <ul style="list-style-type: none"> <li>- Owner Oak Lodge / Holybank Nursing Homes</li> <li>- Chair of Governors at Bardoc</li> <li>- Shareholder in Rock Healthcare</li> </ul> </li> </ul>	<p>Specific arrangements in respect of potential conflicts arising from the personal and associated declarations to be given further consideration.</p> <p>General guidance to be followed in respect of declaring conflicts of interest where identified, in advance and during the meeting.</p>

Dr. Wissam El-Jouzi,	North Sector Chair	<p>Personal</p> <ul style="list-style-type: none"> <li>• GP Principal, Tottington Medical Practice.</li> <li>• Member of the Bury GP Federation.</li> <li>• Minor surgery lead in the practice.</li> <li>• North Sector Chair.</li> </ul> <p>Associated</p> <ul style="list-style-type: none"> <li>• Spouse is also GP at Tottington Medical Practice.</li> </ul>	<p>Specific arrangements in respect of potential conflicts arising from the personal and associated declarations to be given further consideration.</p> <p>General guidance to be followed in respect of declaring conflicts of interest where identified, in advance and during the meeting.</p>
Andrew Clough	<p><b>Governing Body Vice Chair</b></p> <p>Lay Member for Quality &amp; Risk</p>	<p>Personal</p> <ul style="list-style-type: none"> <li>• Director AECUS Management &amp; Training Services Ltd.</li> </ul> <p>Associated</p> <ul style="list-style-type: none"> <li>• None</li> </ul>	<p>No specific management arrangements required.</p> <p>General guidance to be followed in respect of declaring conflicts of interest where identified, in advance and during the meeting.</p>
David McCann	Lay Member for Patient and Public Participation	<p>Personal</p> <ul style="list-style-type: none"> <li>• Senior Partner Woodcocks Solicitors, Bury.</li> <li>• Non-Executive Director Rock Healthcare Limited, Bury.</li> <li>• Non-Executive Director Praxis Real Estate Management Limited, Manchester</li> </ul> <p>Associated</p> <ul style="list-style-type: none"> <li>• None</li> </ul>	<p>Specific arrangements in respect of potential conflicts arising from the Non-Executive Director of Rock Healthcare Limited to be given further consideration.</p> <p>General guidance to be followed in respect of declaring conflicts of interest where identified, in advance and during the meeting.</p>
Chris Wild	Lay Member for Audit, Remuneration and Conflicts of Interest	<p>Personal</p> <ul style="list-style-type: none"> <li>• Directorships in Energy, Finance and Horticulture companies none of which contract with NHS.</li> </ul> <p>Associated</p> <ul style="list-style-type: none"> <li>• None</li> </ul>	<p>General guidance to be followed in respect of declaring conflicts of interest where identified, in advance and during the meeting.</p>
Mr Amarba Singh Chandock	Governing Body Secondary care Consultant	<p>Personal</p> <ul style="list-style-type: none"> <li>• Director ORAS Locum Limited</li> </ul> <p>Associated</p> <ul style="list-style-type: none"> <li>• Spouse is Locum GP in Birmingham</li> </ul>	<p>General guidance to be followed in respect of declaring conflicts of interest where identified, in advance and during the meeting.</p>

Lesley Jones	Director of Public Health	Personal <ul style="list-style-type: none"> <li>• None</li> </ul> Associated <ul style="list-style-type: none"> <li>• None</li> </ul>	General guidance to be followed in respect of declaring conflicts of interest where identified, in advance and during the meeting.
<b>In Attendance</b>			
<b>Paul Horrocks, NED Bury Hospice</b>			